

VZ BUMPER RACE SCOOP

-2005-2013 CORVETTE C6-



TOOLS

(not included)



- power tool with cutting wheel capable of cutting through 3/16" aluminum and plastic.
- Marker (sharpie)
- Masking tape
- Rivet Gun tool
- Hack Saw Blade



DISCLAIMER

- **Before attempting to install the bumper scoop review entire installation instructions and determine if you have the tools and the mechanical skill level necessary to properly install them. Although I have attempted to document step by step for an easy install, you may find the installation above your abilities. If that's the case, we recommend having a professional shop install it for you.**
- **This modification is intended for race or offroad vehicles only that may never be used on DOT highways/streets. To make the scoop fully functional, the installation requires cutting off portions of the OEM bumper cover, bumper safety foam and portions of an alum plate in the engine compartment. Once removed, these parts cannot be put back on the car and may compromise vehicle safety features on front impacts.**
- **In some vehicles this modification may require retuning the vehicles computer or change other parts as needed to take full advantage of the cold air rushed into the engine bay.**
- **Please ensure proper safety precautions are taken before working on the car.**
- **Place car on a safe, dry and level surface. Secure car so that it doesn't move while working on it.**
- **Due to strict regulations by the Department of Transportation, these scoops and All products sold by VELOZ DESIGNS LLC are for off-road and/or car show purposes only- on vehicles that will not be driven on public streets/highways. Products have not been approved for street or highway use. VELOZ DESIGNS LLC discourages the use of these car body aero components on public streets and highways or anywhere where public may be put in danger by the use of such components. VELOZ DESIGNS LLC is not responsible for injuries or damages as a result of the use of any of our products we sell.**

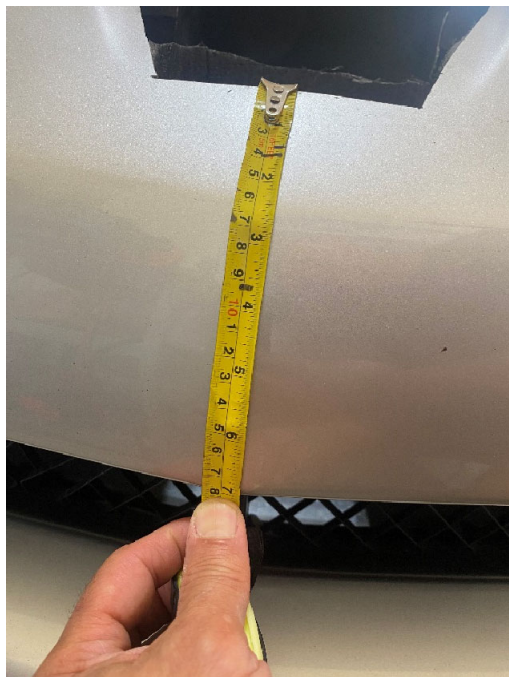


Locate the provided paper template and mark bumper where it will be cut off. Place template in the center of the bumper. Use tape to hold in place while marking it off.





Proceed to cut along the marked lines with a power tool. Clean edges from irregularities. It should have nice smooth cut edges. The opening will expose and give you access to the bumper foam.



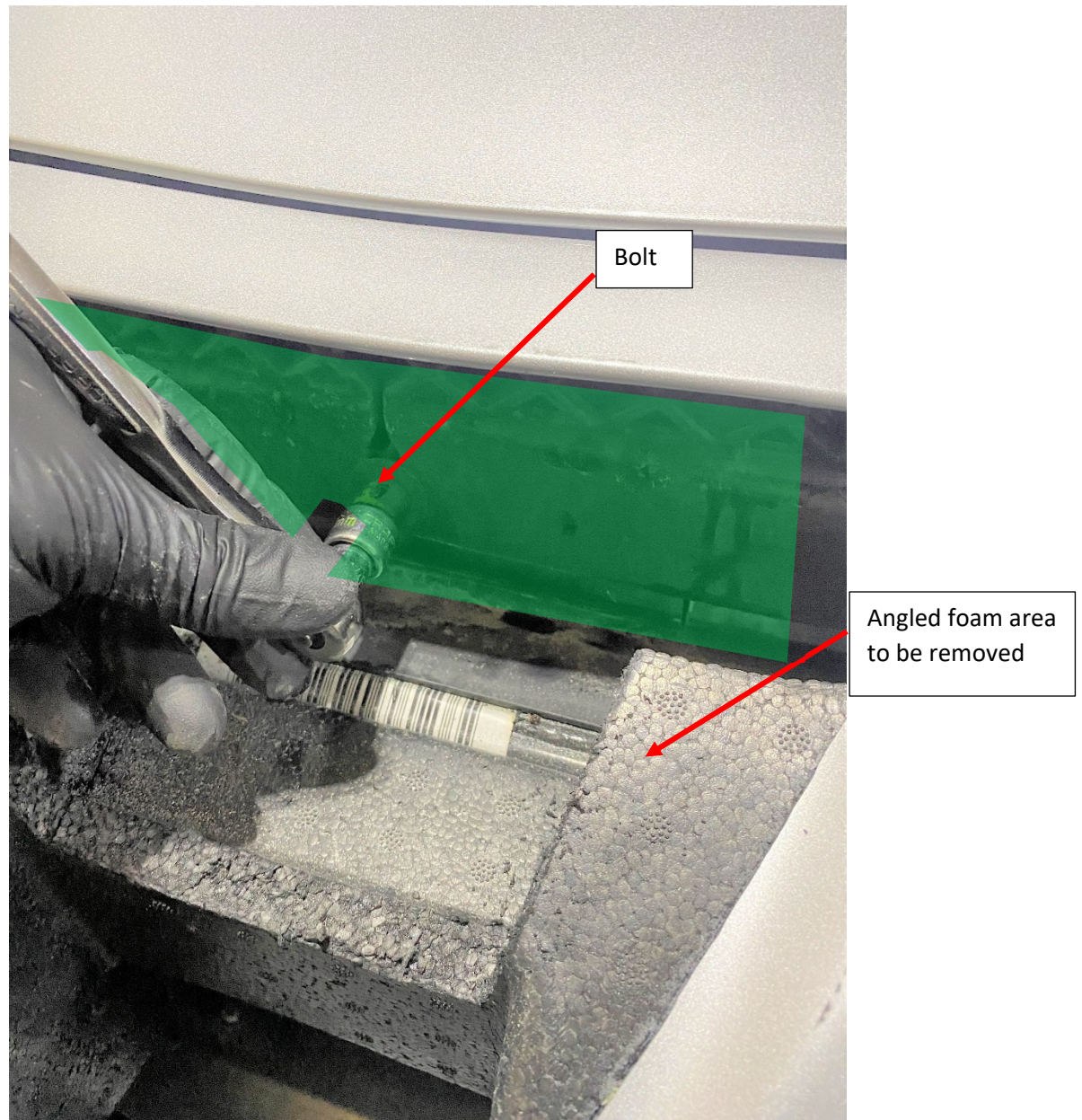
Ensure there is 7" distance from bottom of opening to top of bumper edge below.



Portions of this foam must be cut off. This step will require the use of a hack saw blade. First cut center portion as shown.

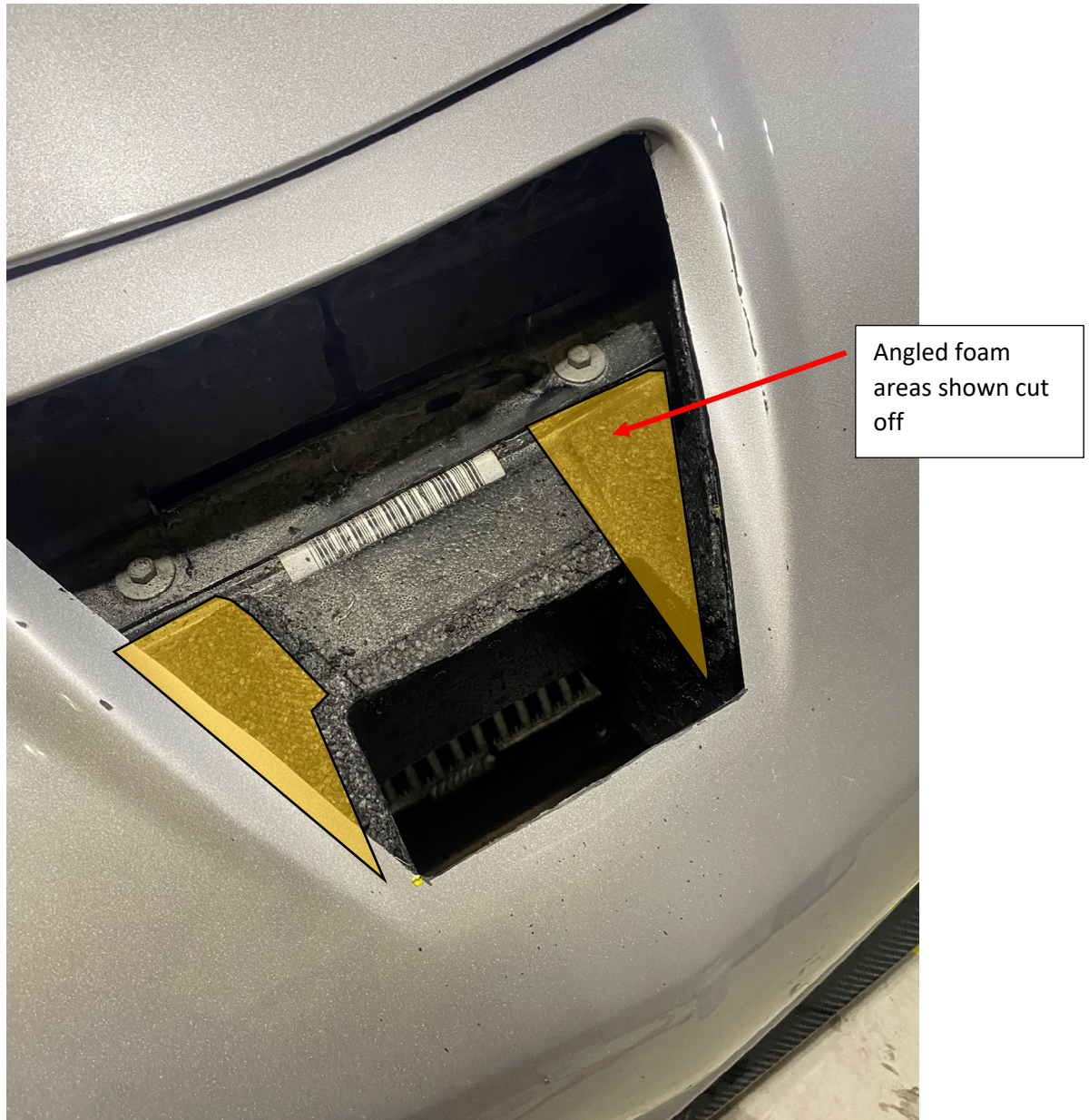


Center section of foam removed.



With the center section of the foam removed, it will give you access to this inner structure support. Remove and discard bolt. Proceed to cut both angled foam areas of the bumper.

Please note the area in green will eventually be cut off too.

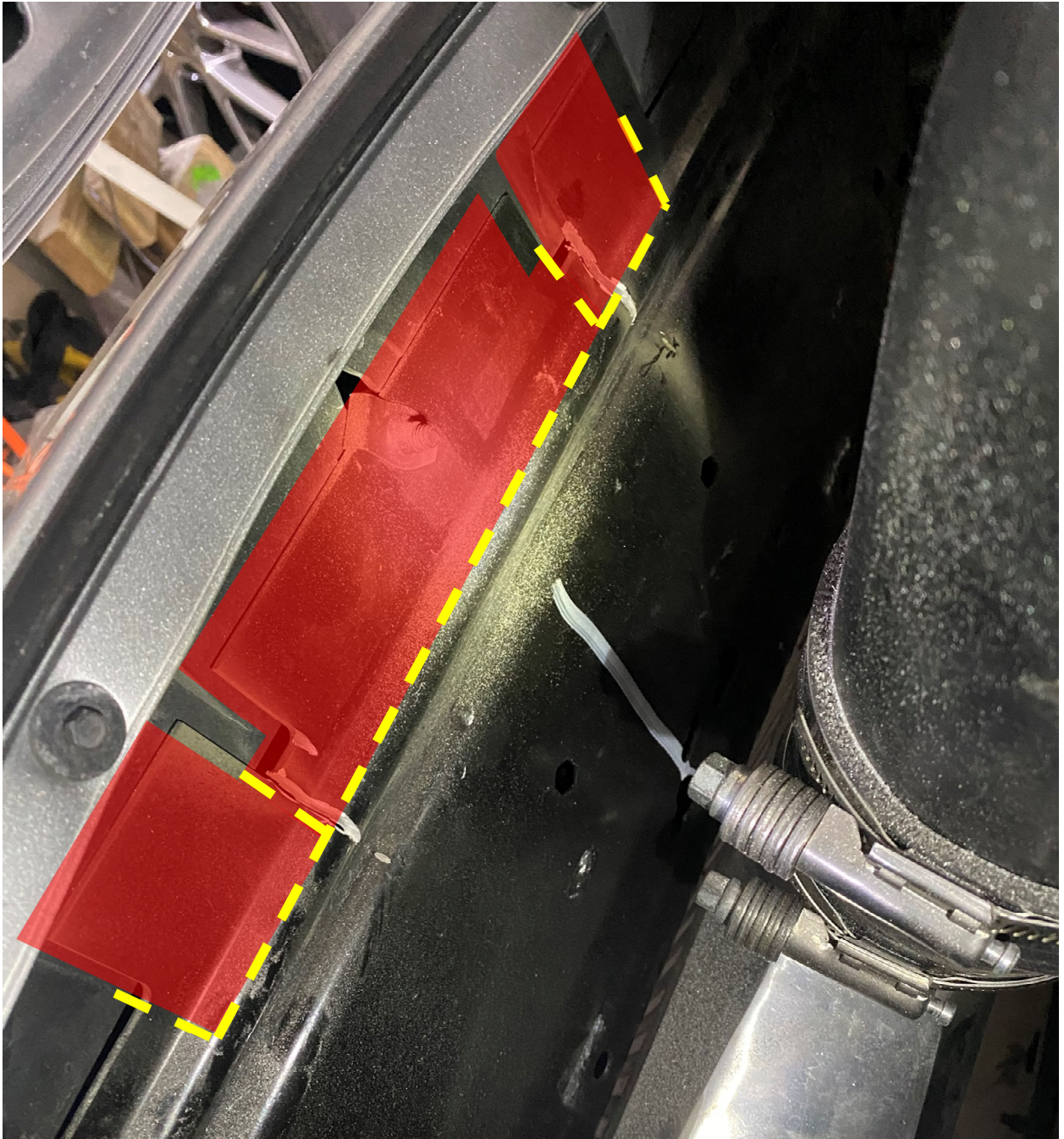


Ensure the foam has been cut flush with the horizontal surfaces. A nice flat area should be left over.



Then proceed to remove inner structure plastic including the upper mesh plastic section.

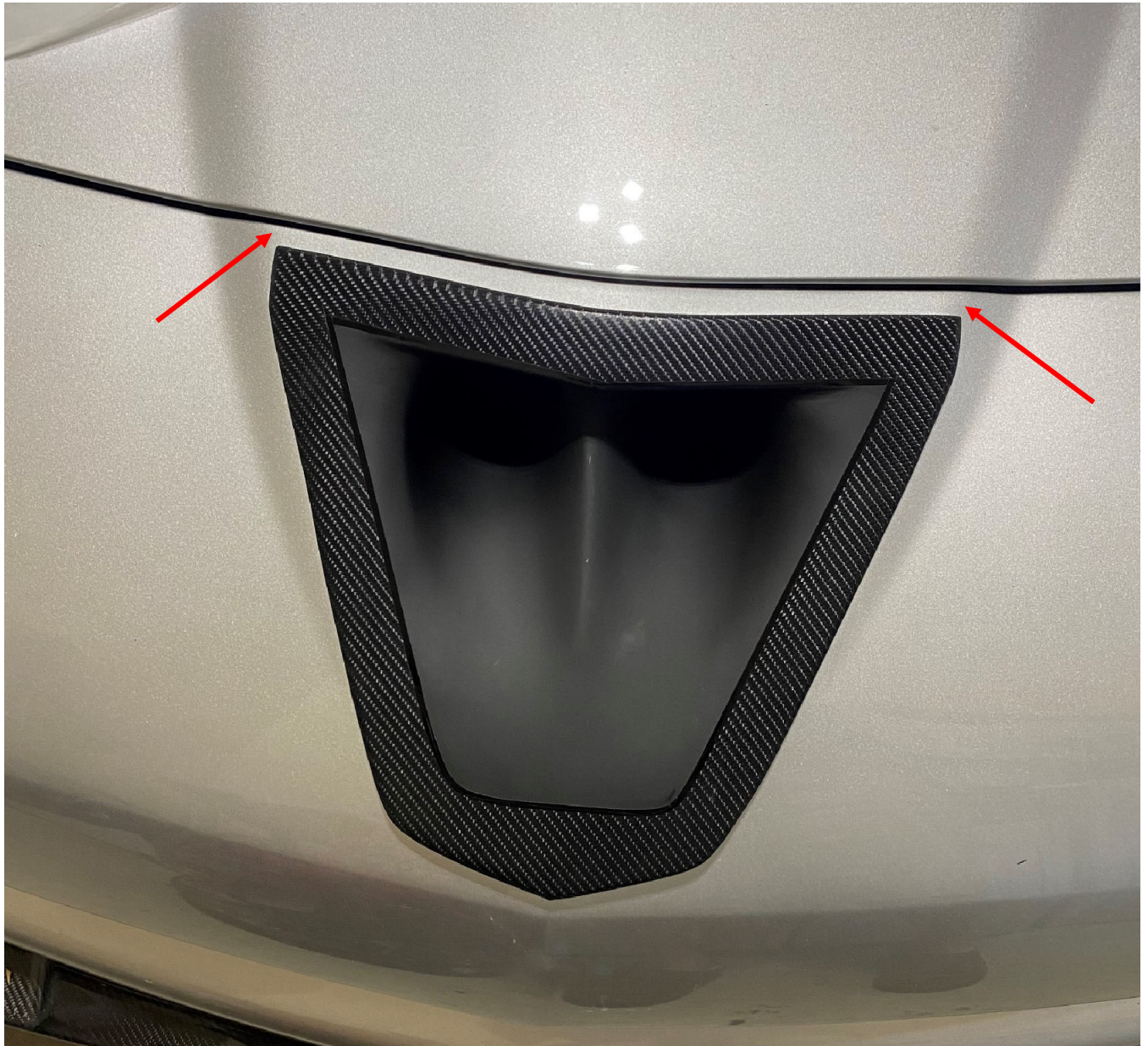
This is ABS plastic about 3/16" thick. It requires a power tool with abrasive disc to cut off. This section will match the width of the interior alum plate cut opening on next step.



Proceed to the engine compartment and locate this alum plate bumper support. It is about 3/16" thick high-grade alum. Mark area as shown where it must be cut and removed from vehicle. This will require careful masking and cutting with a power tool along the lines in yellow. Once the yellow areas are cut the (red) plate will come off.



Shown here is the result after cutting and removing portions of the alum plate. Debur edges and you may choose to paint this are in flat black to hide the cut. Continue to cut the remaining two sides (red)



Locate the scoop and dry fit in the opening. Ensure entire perimeter of the scoop is touching the bumper surface. If it is not, then pull off the scoop and remove more material from edges to ensure proper fitment. Additional cutting of the alum plate and or inner bumper plastic structure may be required. Ensure the two top edge gaps are the same.



Once the scoop fits correctly and it is centered on the opening/bumper, while holding scoop in place, mark and drill holes on each corner – 3 exploding rivets are included with the kit.



Insert the rivets on each corner and ensure the scoop hasn't moved. Once you feel the scoop is in its perfect location, proceed with popping the rivets in place.



Complete look of the scoop with rivets.