

F TYPE 3 PIECE FRONT SPLITTER



F TYPE 3 PIECE FRONT SPLITTER

TOOLS

(not included)



- ELECTRIC OR BATTERY OPERATED DRIVER
- RATCHET, EXTENSION AND 5/16" SOCKET
- T30 STAR BIT



- HYDRAULIC FLOOR JACK
- JACK STANDS (2 min.)

F TYPE 3 PIECE FRONT SPLITTER

PARTS LIST



- 5 – 6MM X 35 BOLTS
- 5 – PLASTIC SPACERS
- 8 – 1 1/4" #12 SCREWS AND WASHERS



- Left and Right winglets
- Front lip extension

F TYPE 3 PIECE FRONT SPLITTER

PRE- INSTALLATION

- Before attempting to install the side skirts, review entire installation instructions and determine if you have the tools and the mechanical skill level necessary to properly install them. Although I have made them easy to install, you may find the installation above your abilities. If that's the case, I recommend having a professional shop install them for you.
- The installation requires drilling bottom of the rocker panel
- Instructions were created from a 2016 F Type R.
- Please ensure proper safety precautions are taken before working under the car.
- Place car on a safe, dry, and level surface. Secure car so that it doesn't move while jacking it up or during installation.
- Jack car up from designated manufacturer points under car. Both front wheels must be off the ground and properly supported.
- Place jack-stands under car per manufacturer's recommendation before removing hydraulic jack.
- Ensure bottom of front bumper is clean and free of debris.

F TYPE 3 PIECE FRONT SPLITTER



- Begin by removing the OEM lower wing via the 4 OEM screws shown in picture (driver and passenger) Remove drivers and passengers wings
- Discard screws.



Passenger side



Middle



Driver side

- Next remove the 5 – 6mm lower trim bolts. These require T30 star socket
- Discard bolts

F TYPE 3 PIECE FRONT SPLITTER



Locate the new driver side winglet and align OEM driver side lower wing with the holes on the new winglet. Locate the 4 #12 screws and washers.

Proceed to do the same with passenger side



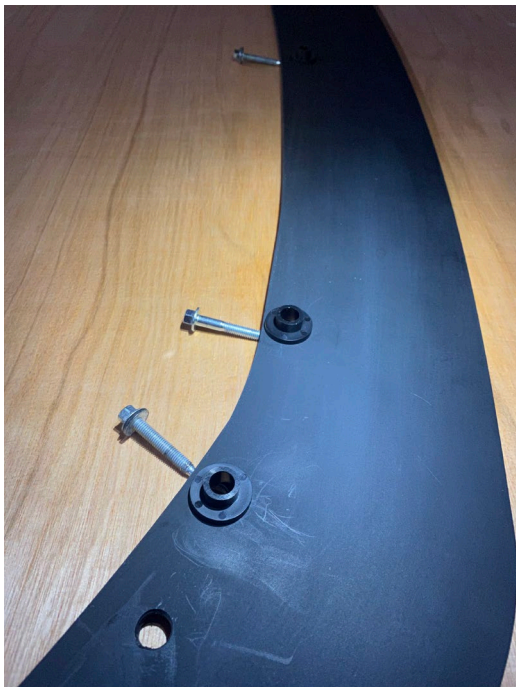
While holding both pieces together and using the OEM lower wing as a guide to align to OEM locations, attach using 2 of the new #12 screws – only the two rear ones for now and hand tightened – see arrows

Proceed to do same with passenger side

F TYPE 3 PIECE FRONT SPLITTER



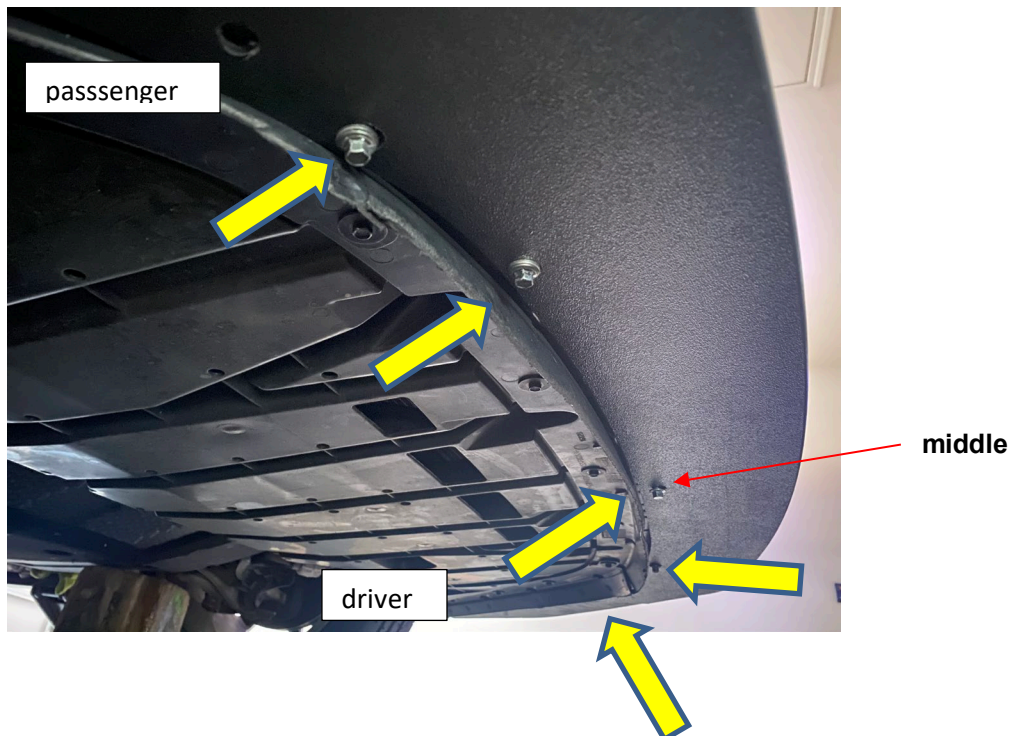
Locate the new front lip extension,
the 5 – 6mm bolts/washers and the
plastic spacers (wider base of
spacer will go down on top of front
lip face



F TYPE 3 PIECE FRONT SPLITTER

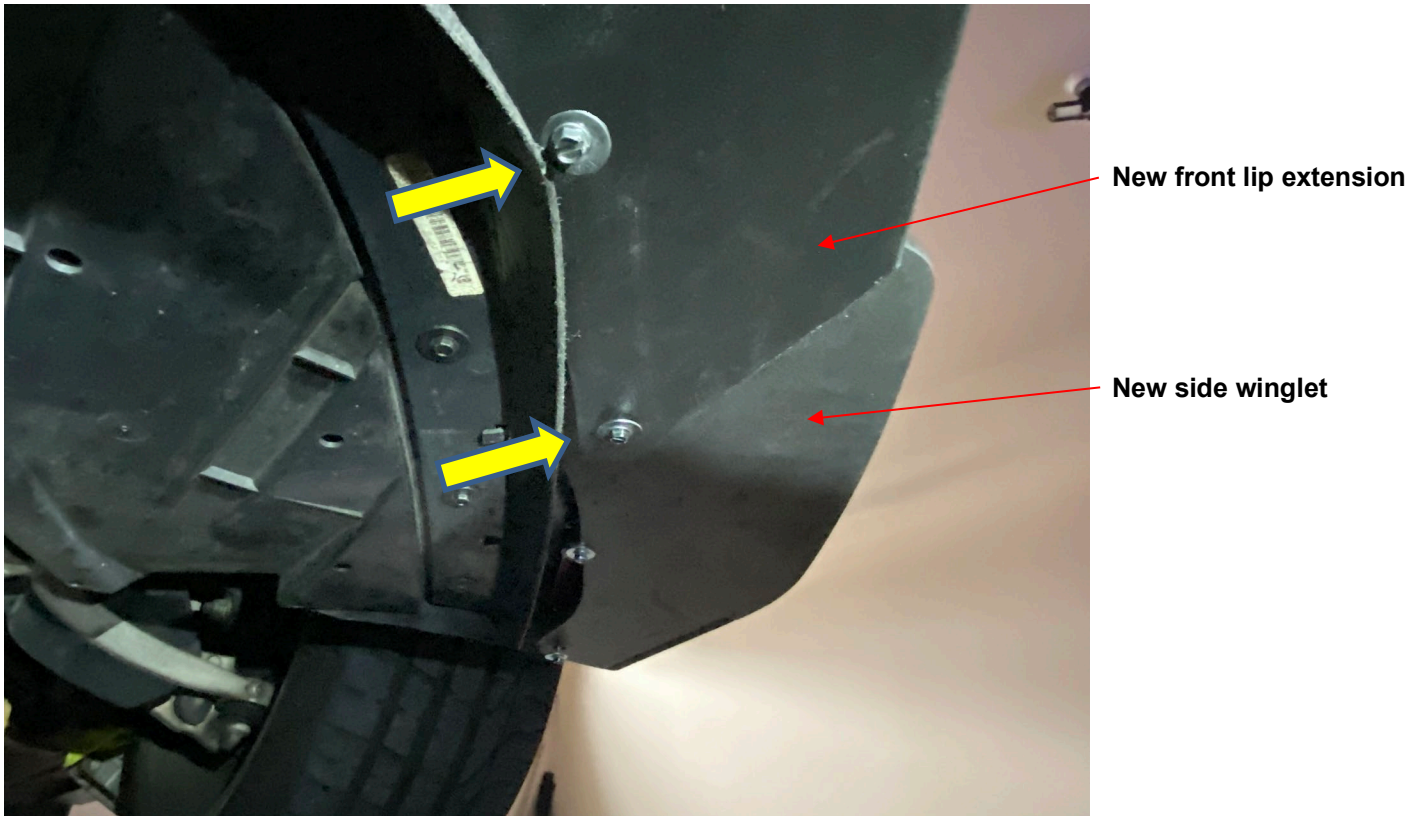


Starting in the middle, place the front lip extension under the bumper lower edge and temporary attach the middle with one of the 6mm bolts and spacer. Hand tightened for now.



Continue to install the remaining 4- 6mm bolts and spacers. Should be 2 on each side. All these should be hand tightened for now.

F TYPE 3 PIECE FRONT SPLITTER



The front lip extension has two holes at each end that will line up with two holes on the new side winglet (driver side shown). Locate the two remaining #12 screws for that side and screw attach both new pieces to the OEM hole location. Hand tightened for now.

Do the same for the passenger side



Check alignment of all pieces including the new side winglets. The end of it should match the edge of the front fender.

F TYPE 3 PIECE FRONT SPLITTER



Once alignment is correct proceed with tightening all the bolts and screws securely. The 6mm bolts up front can be tightened harder than the screws. The screws on the sides screw into a plastic piece without threads. Do not overtighten those.

